



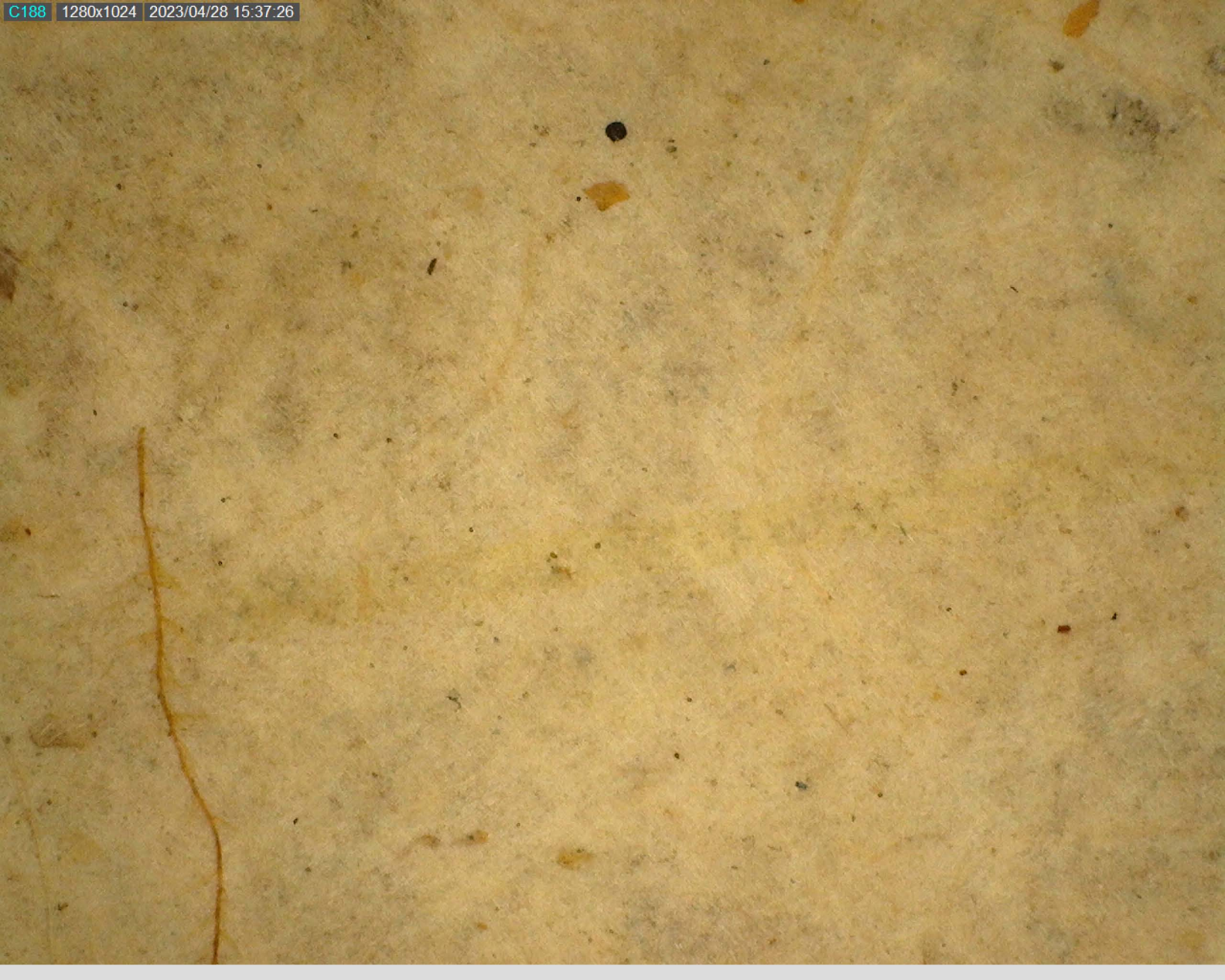


Handwritten text in a dark ink on aged, textured paper. The text is partially obscured by a horizontal line at the top. The visible characters are stylized and appear to be in a non-Latin script, possibly a form of cursive or shorthand. The characters are dark and contrast sharply with the light, fibrous background of the paper.

Handwritten text in a dark ink on aged, yellowish paper. The characters are stylized and appear to be in a non-Latin script, possibly a form of cursive or shorthand. The text is arranged in a single line across the top of the page.

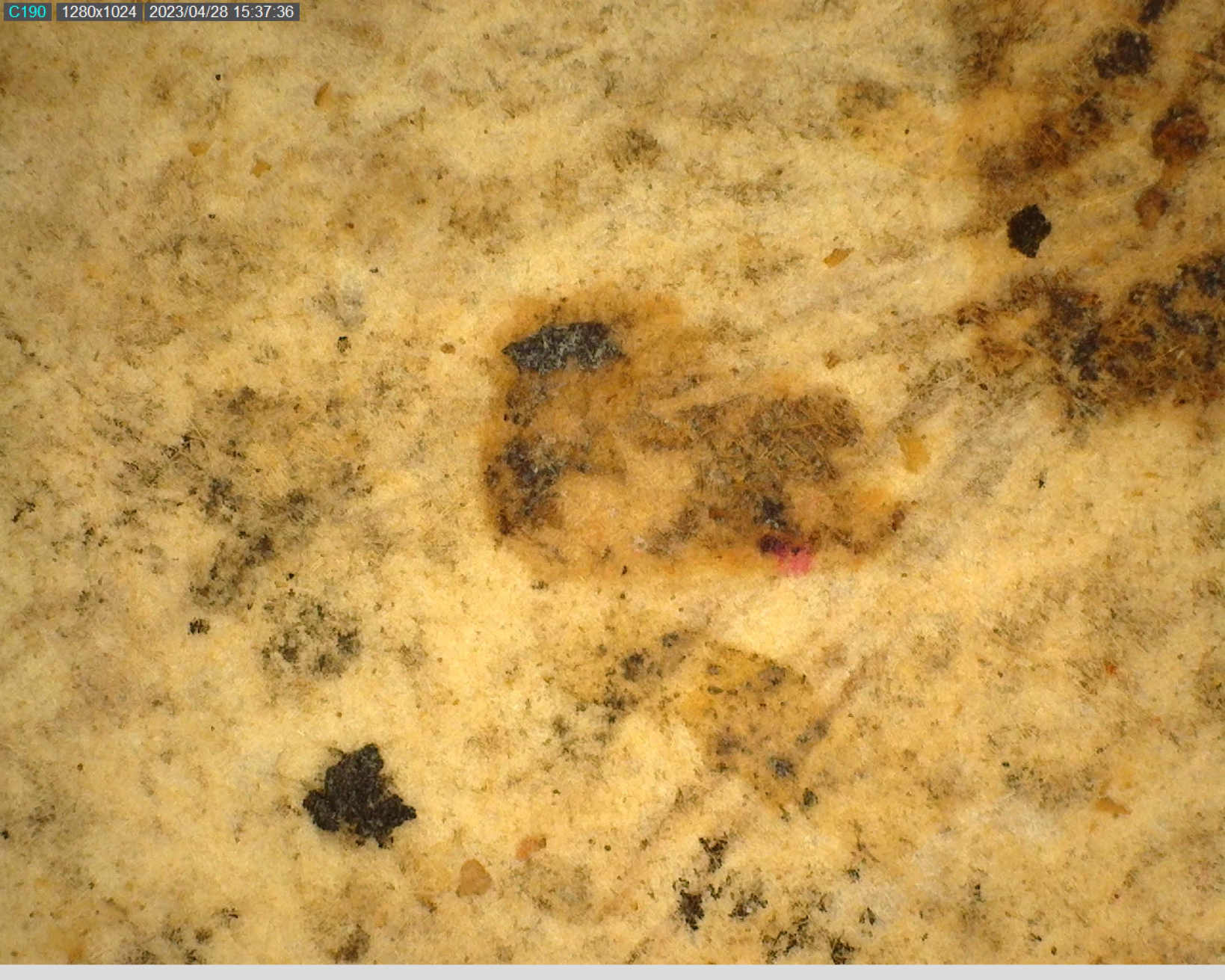
Handwritten characters in black ink on aged, textured paper. The characters are stylized and appear to be in a cursive or semi-cursive script, possibly representing the Chinese characters '世' (Shì) and '年' (Nián), which together mean 'world' or 'years'.











Handwritten text in a dark ink on aged, yellowish paper. The text is partially obscured by dark, irregular marks, possibly ink smudges or damage. The visible characters are: "E", "S", "E", "I".

Handwritten text in a stylized script, possibly a form of shorthand or a specific dialect. The characters are dark and thick, set against a light, textured background. The text is arranged in a single line, with a large, bold character on the left and several smaller, more complex characters to its right. The overall appearance is that of a handwritten note or a page from an old manuscript.

