

ॐ नमो भगवते वासुदेवाय

ॐ नमो भगवते वासुदेवाय

ॐ नमो भगवते वासुदेवाय







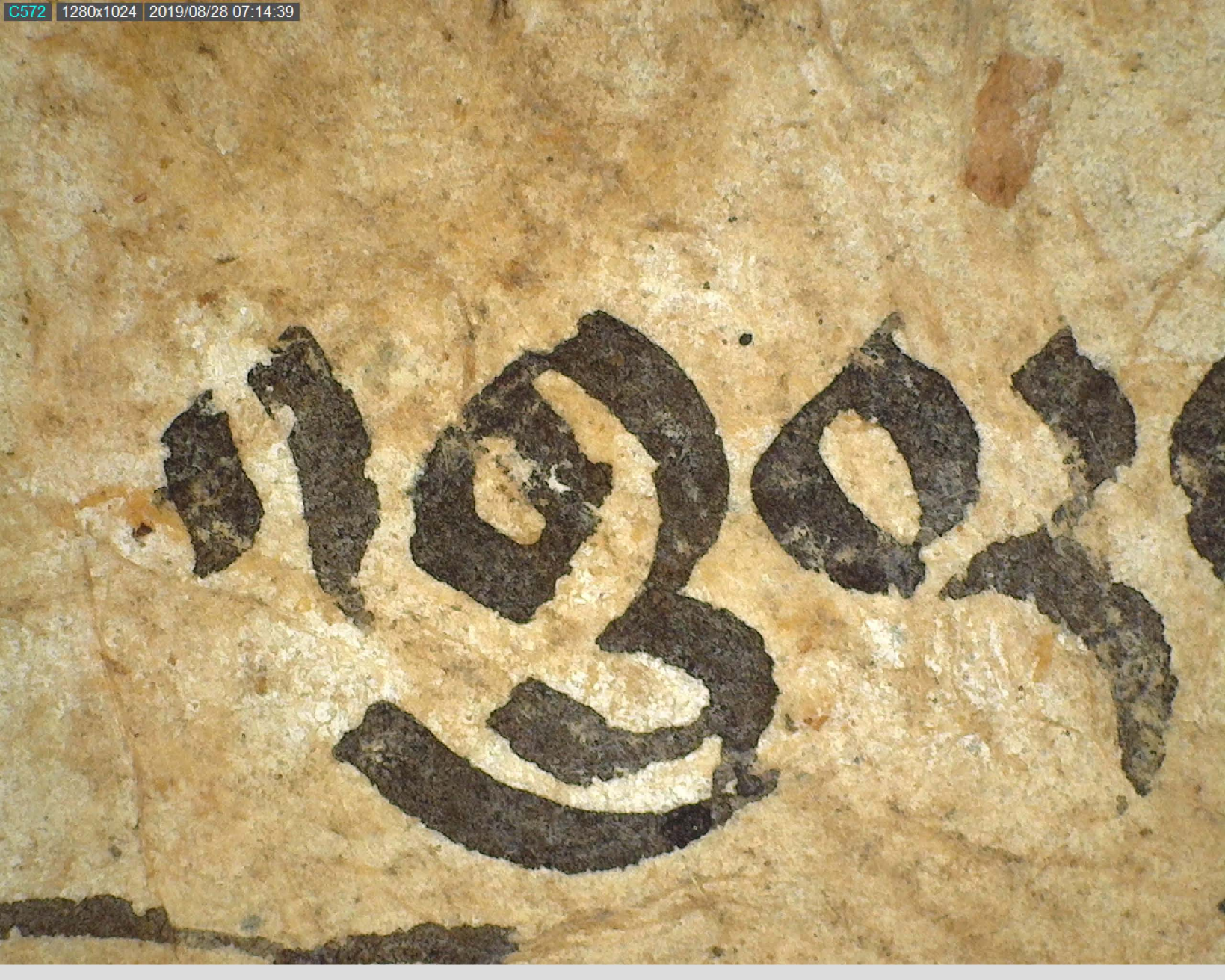








Handwritten text in a dark ink on aged, yellowish paper. The script is highly stylized and appears to be a form of cursive or shorthand. The characters are dark brown/black and stand out against the textured, mottled background of the paper. The text is arranged in a single horizontal line across the middle of the page.



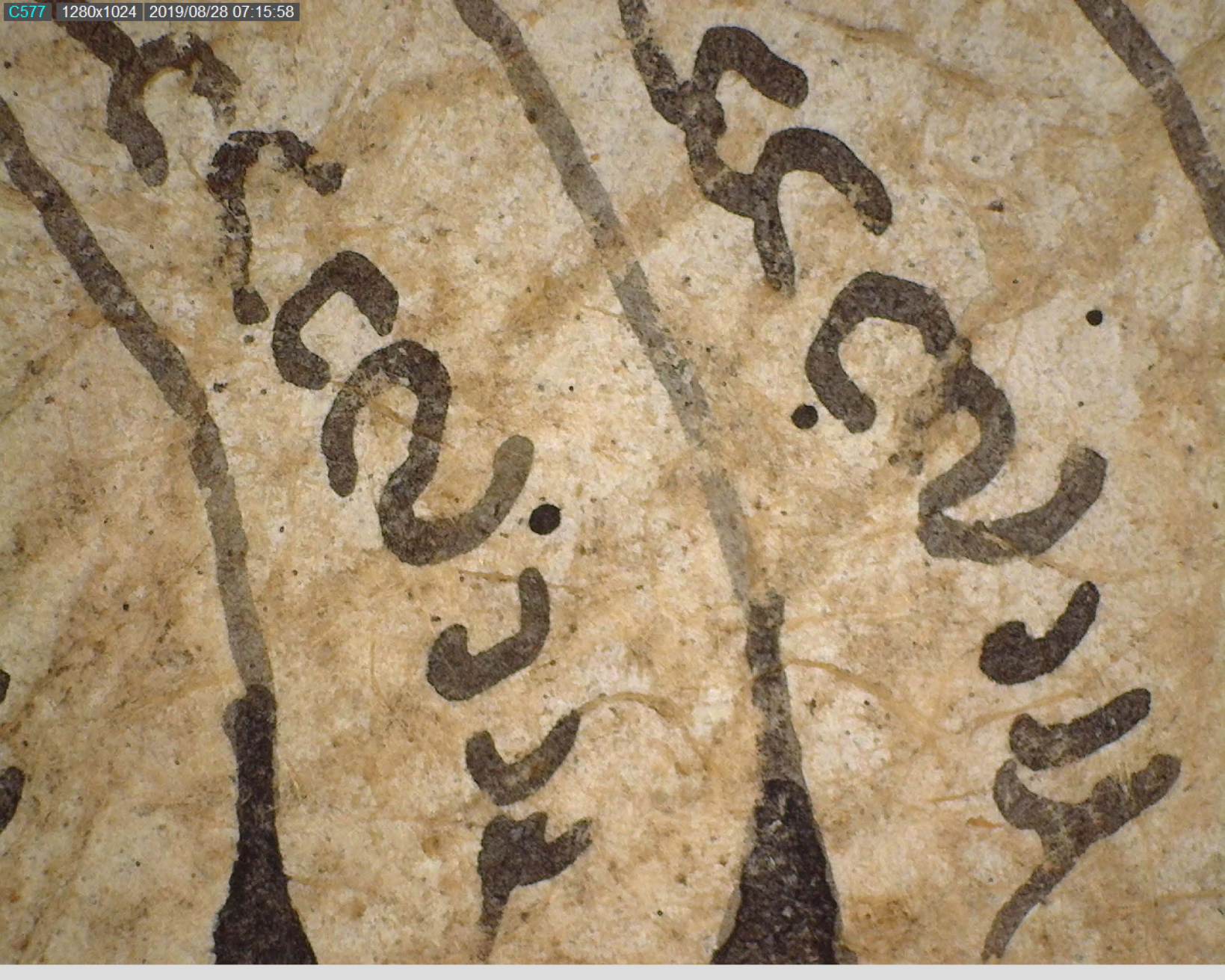




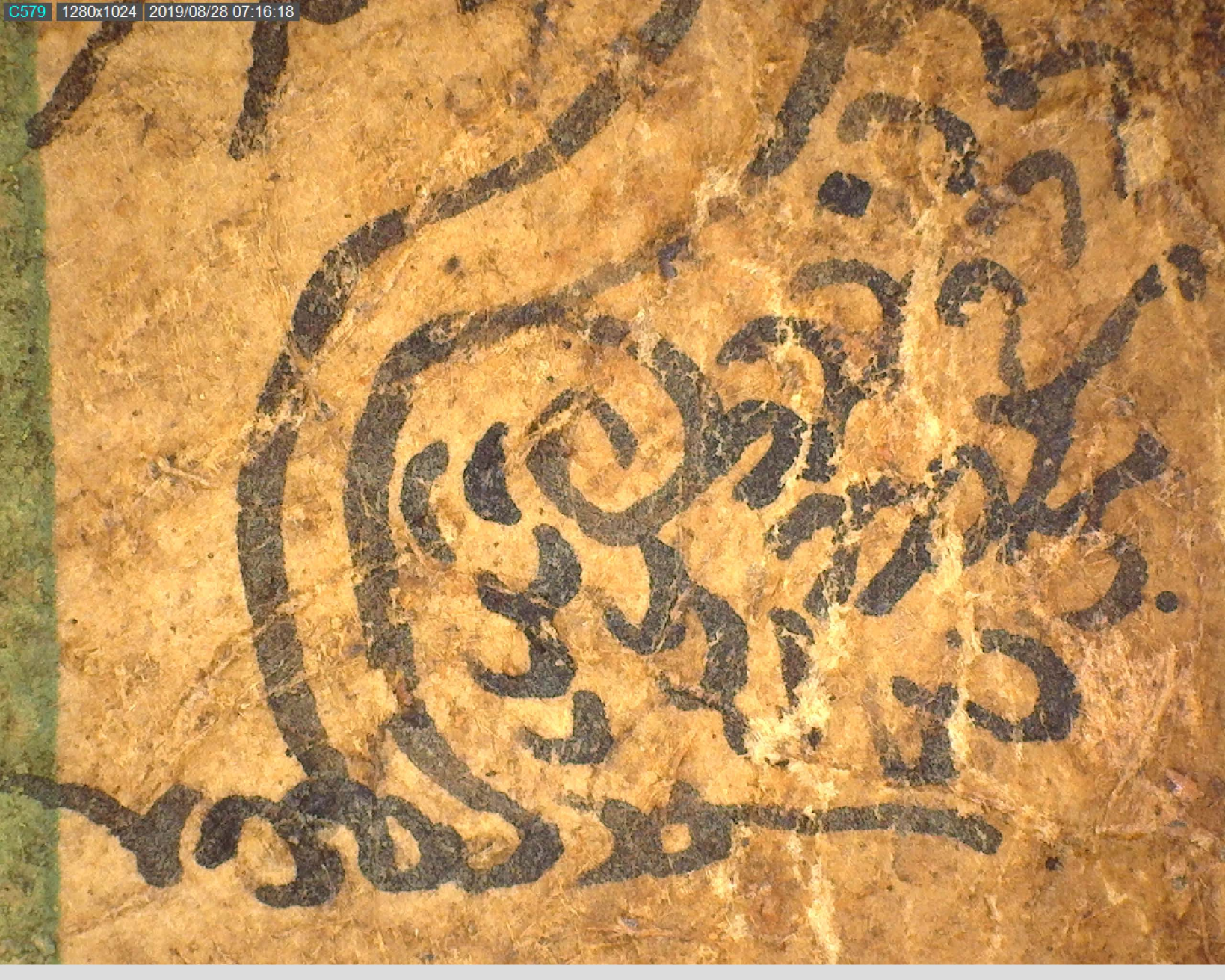


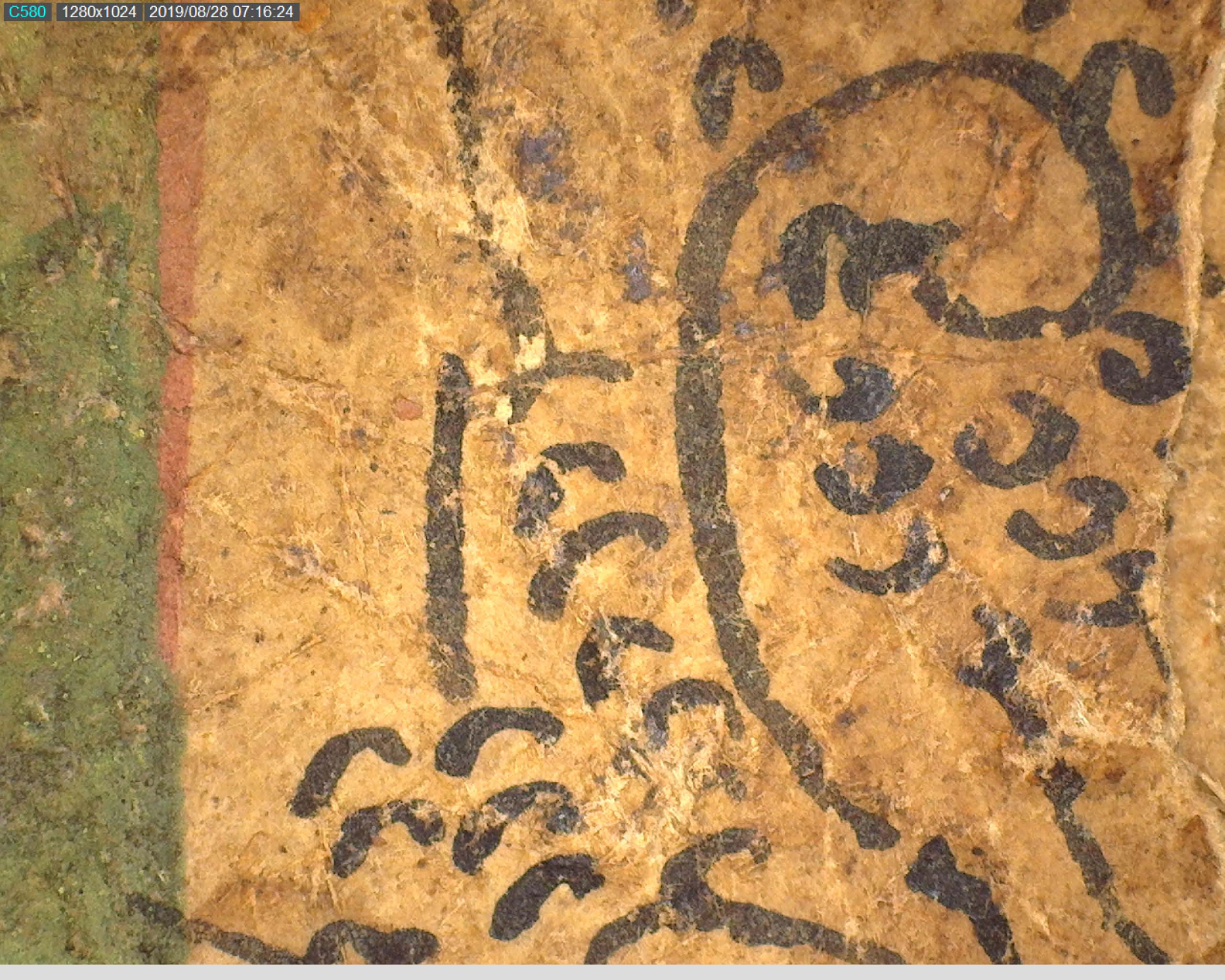


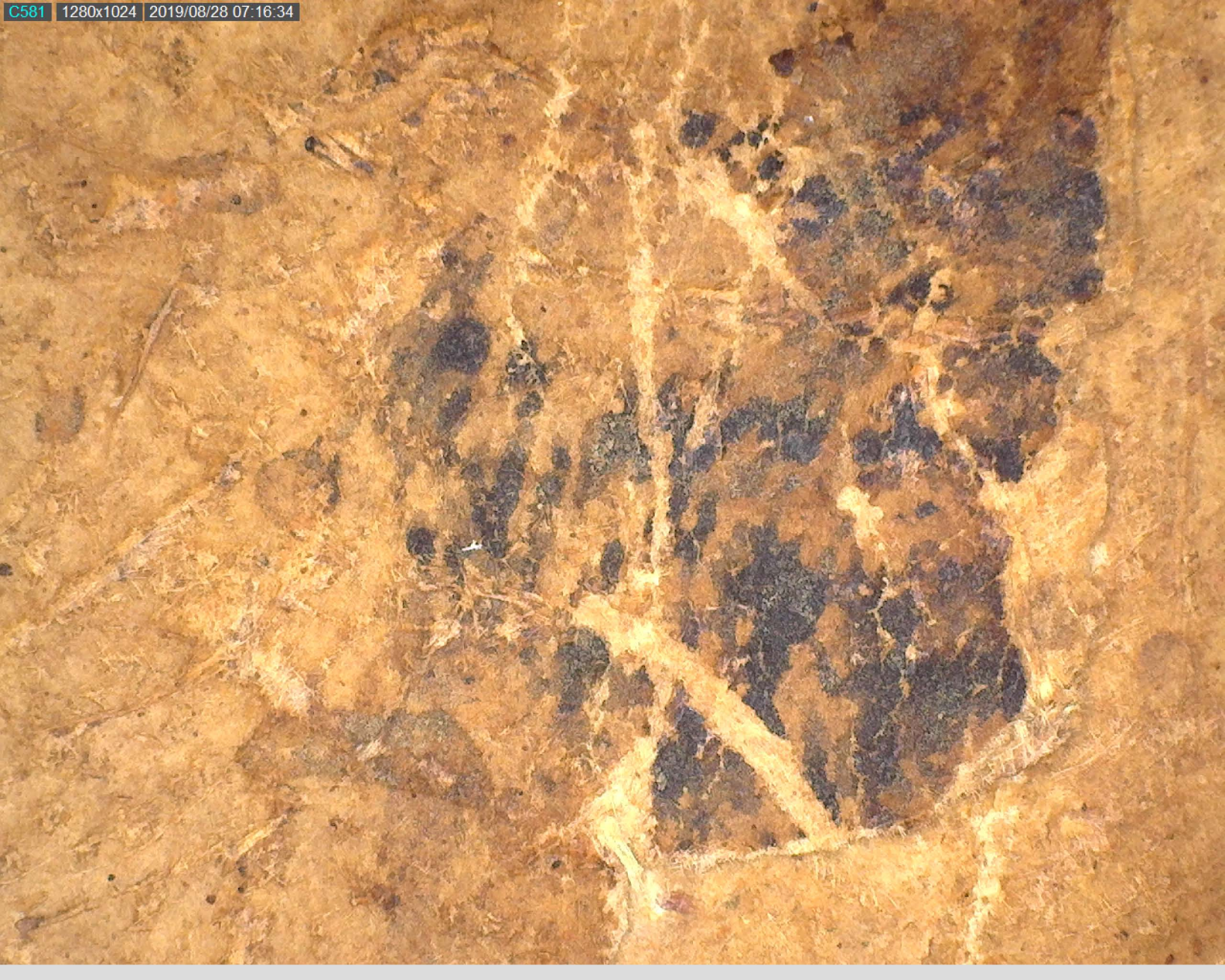
Handwritten text in a dark ink on aged, yellowish paper. The characters are stylized and appear to be in a non-Latin script, possibly Indic or Chinese. The text is arranged in a single line, with some characters being larger and more prominent than others. The ink is dark and somewhat faded, and the paper shows signs of wear and discoloration.

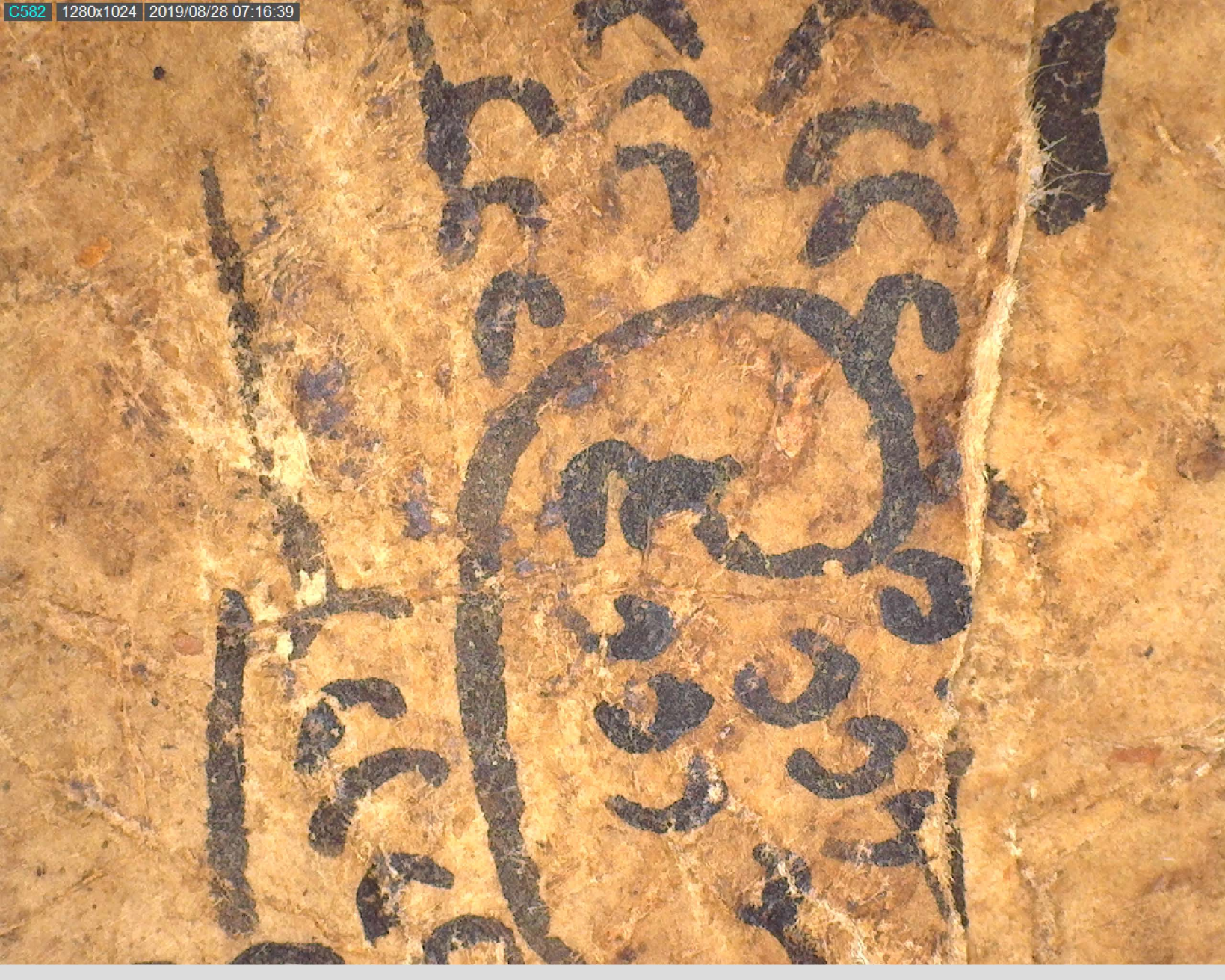














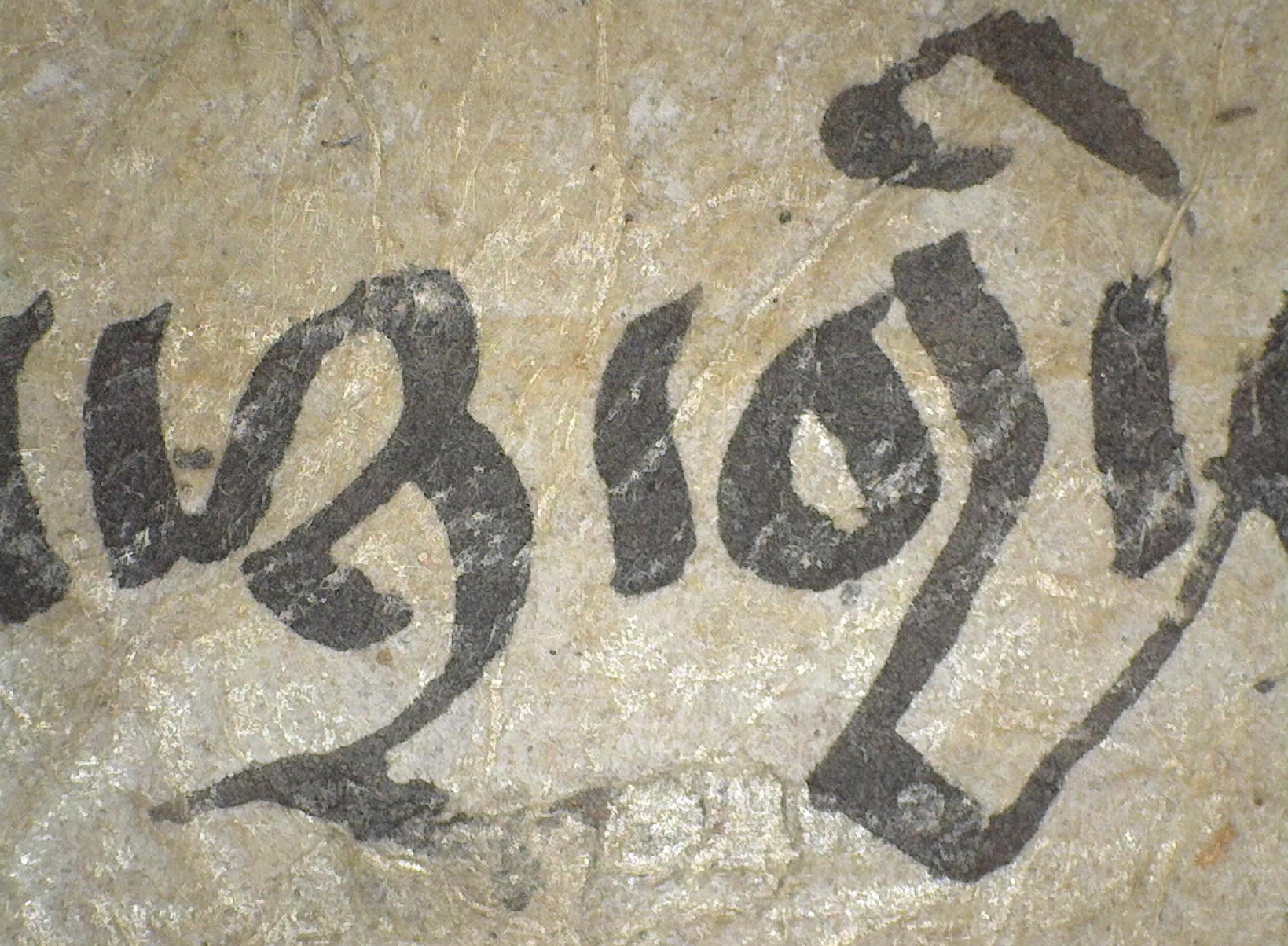








Handwritten text in a dark ink on aged, textured paper. The characters are stylized and appear to be in a non-Latin script, possibly a form of cursive or shorthand. The text is arranged in a single line across the middle of the page. The characters are dark and somewhat irregular, suggesting they were written with a brush or a similar tool. The paper is yellowed and shows signs of wear, including creases and discoloration.



Handwritten text in a dark, possibly ink or charcoal, on aged, yellowish paper. The characters are stylized and appear to be in a non-Latin script, possibly a form of cursive or shorthand. The text is arranged in a single line across the top half of the page.

A small, rectangular piece of reddish-brown material, possibly a stamp or a piece of tape, located at the bottom center of the page.



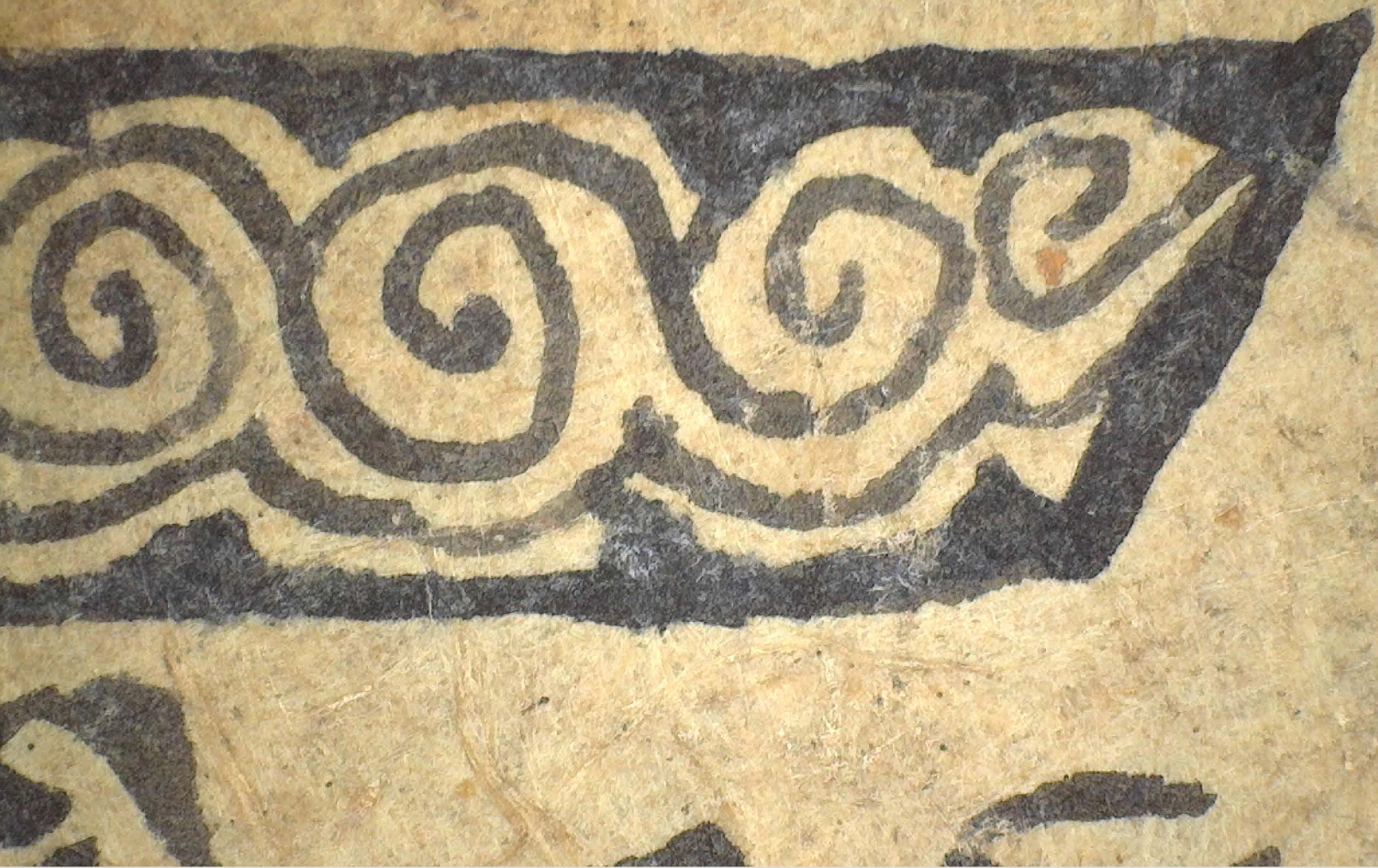




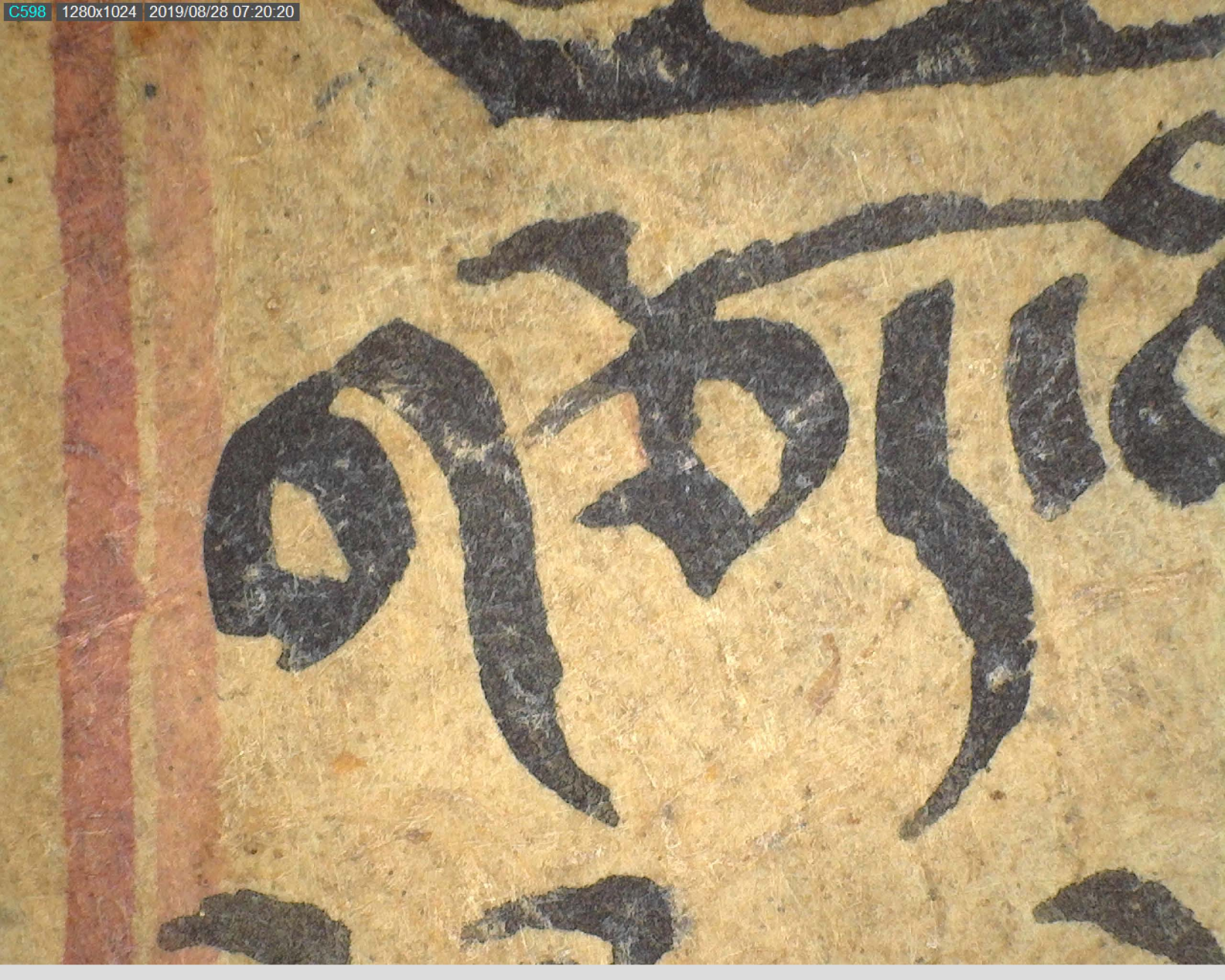


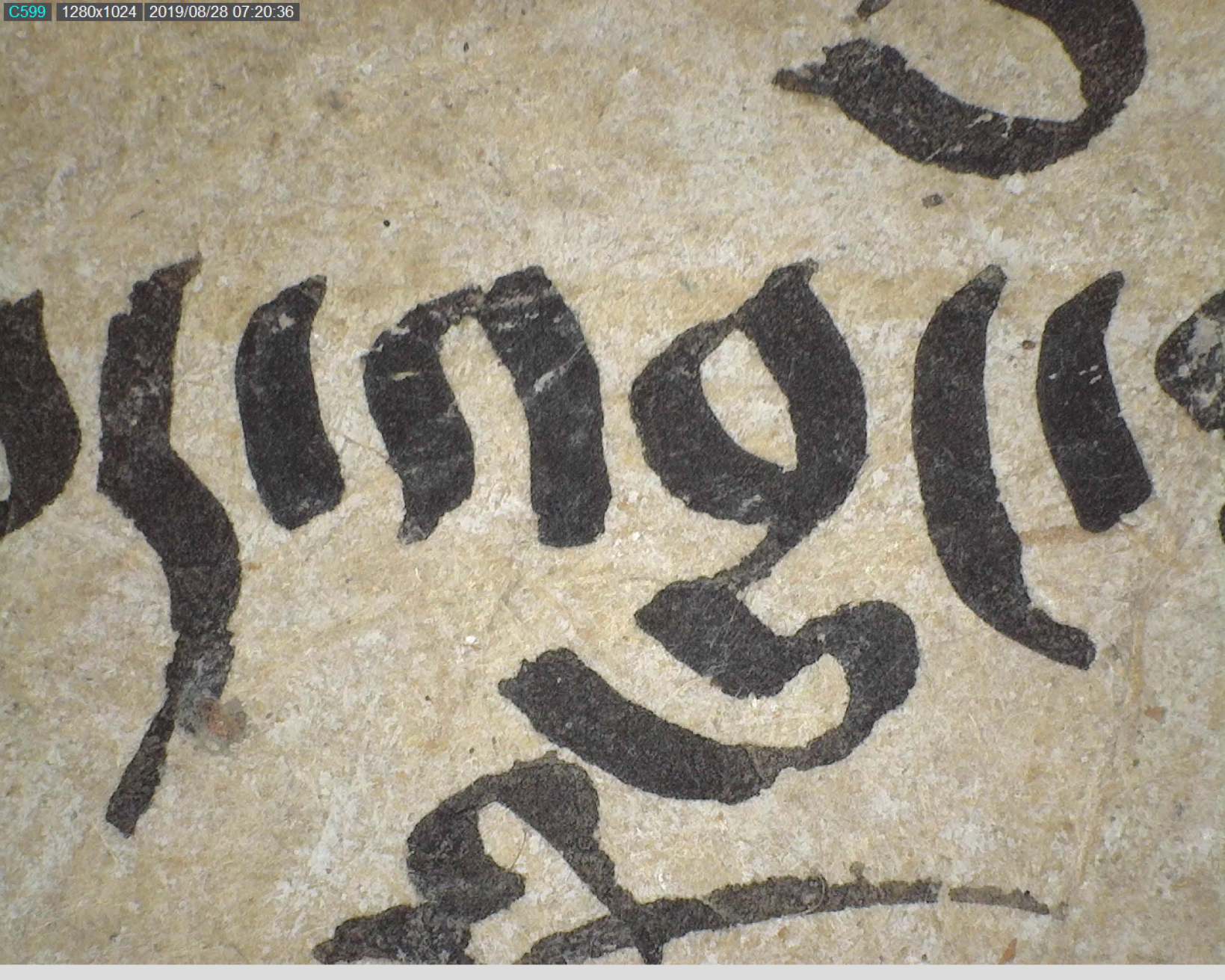


























Handwritten text in a cursive script, possibly Indic or Southeast Asian, on aged, yellowish paper. The characters are dark and somewhat irregular. A vertical red line is visible on the left side of the page.





