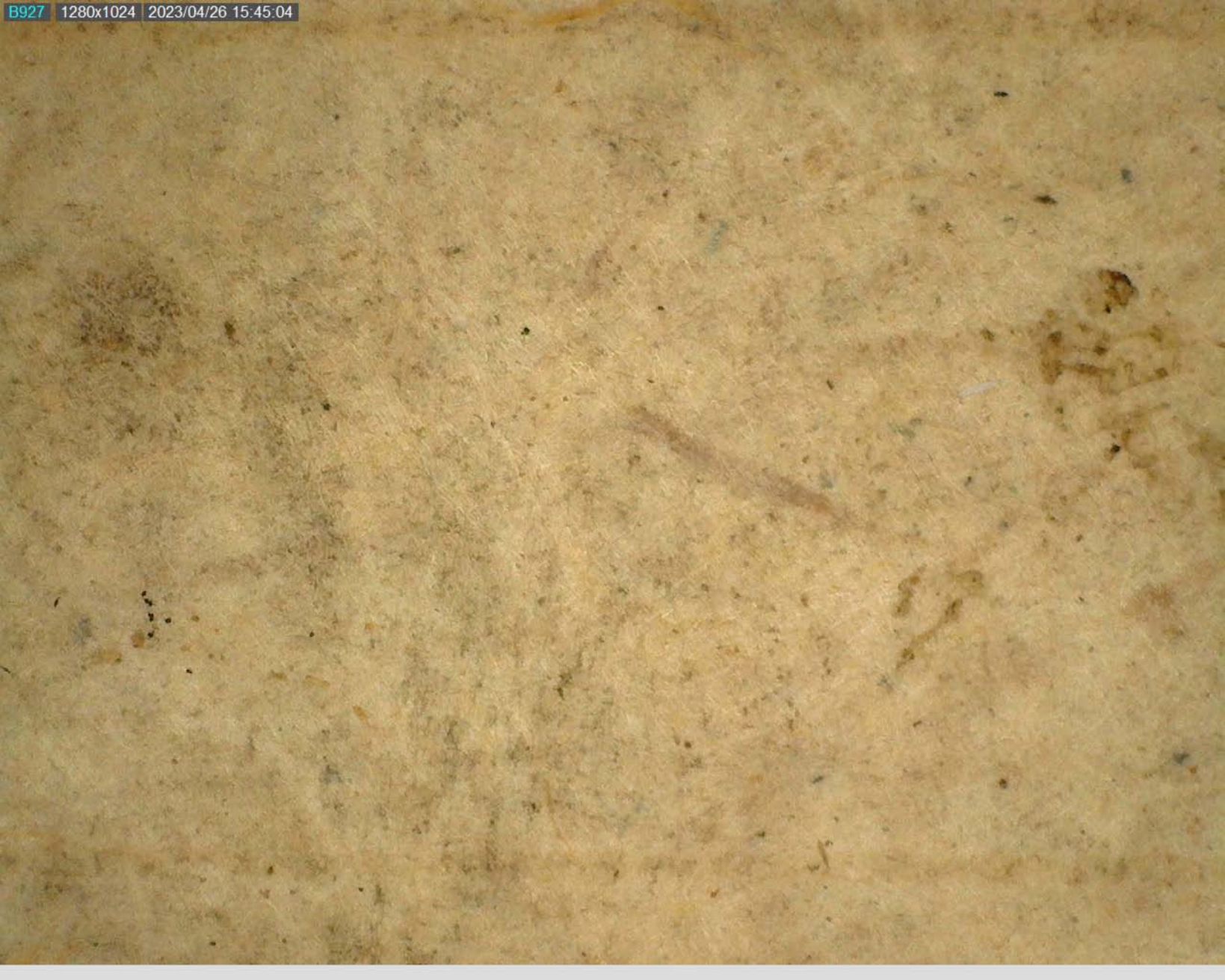


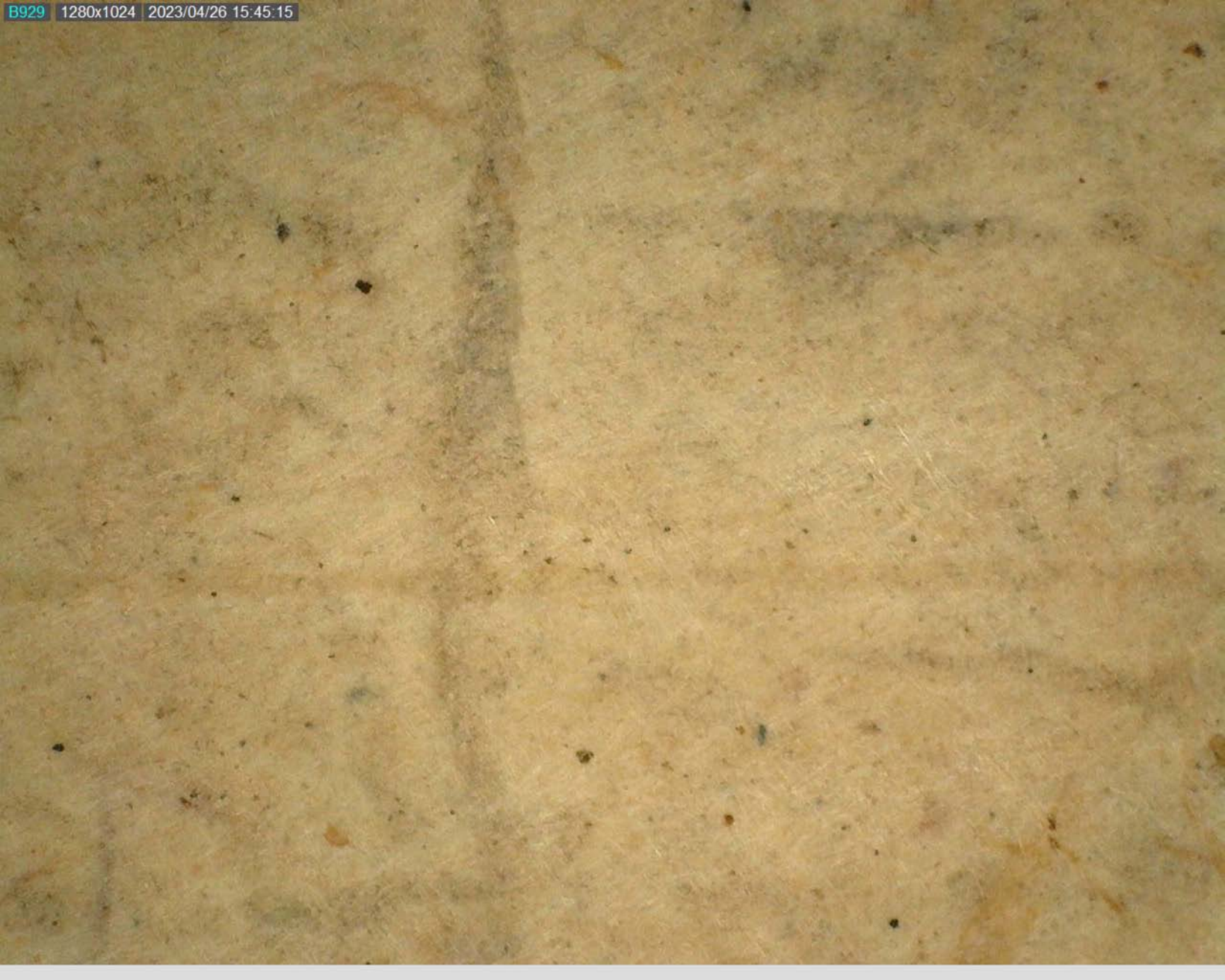
Handwritten text in a stylized script, possibly a form of Arabic or Persian calligraphy, rendered in dark ink on aged, textured paper. The text is partially obscured by a large, dark, irregular shape on the left side, which appears to be a stain or a large character. The visible characters are bold and thick, with some vertical strokes on the right side.



Handwritten text in a cursive script, possibly a form of Urdu or Persian, written in black ink on aged, textured paper. The text is arranged in two lines. The top line contains several characters, including a large initial letter that resembles 'ا' (Alif) followed by 'و' (Waw) and 'س' (Sadeed). The bottom line begins with a character that looks like 'ا' (Alif) followed by 'ب' (Ba) and 'ت' (Ta).



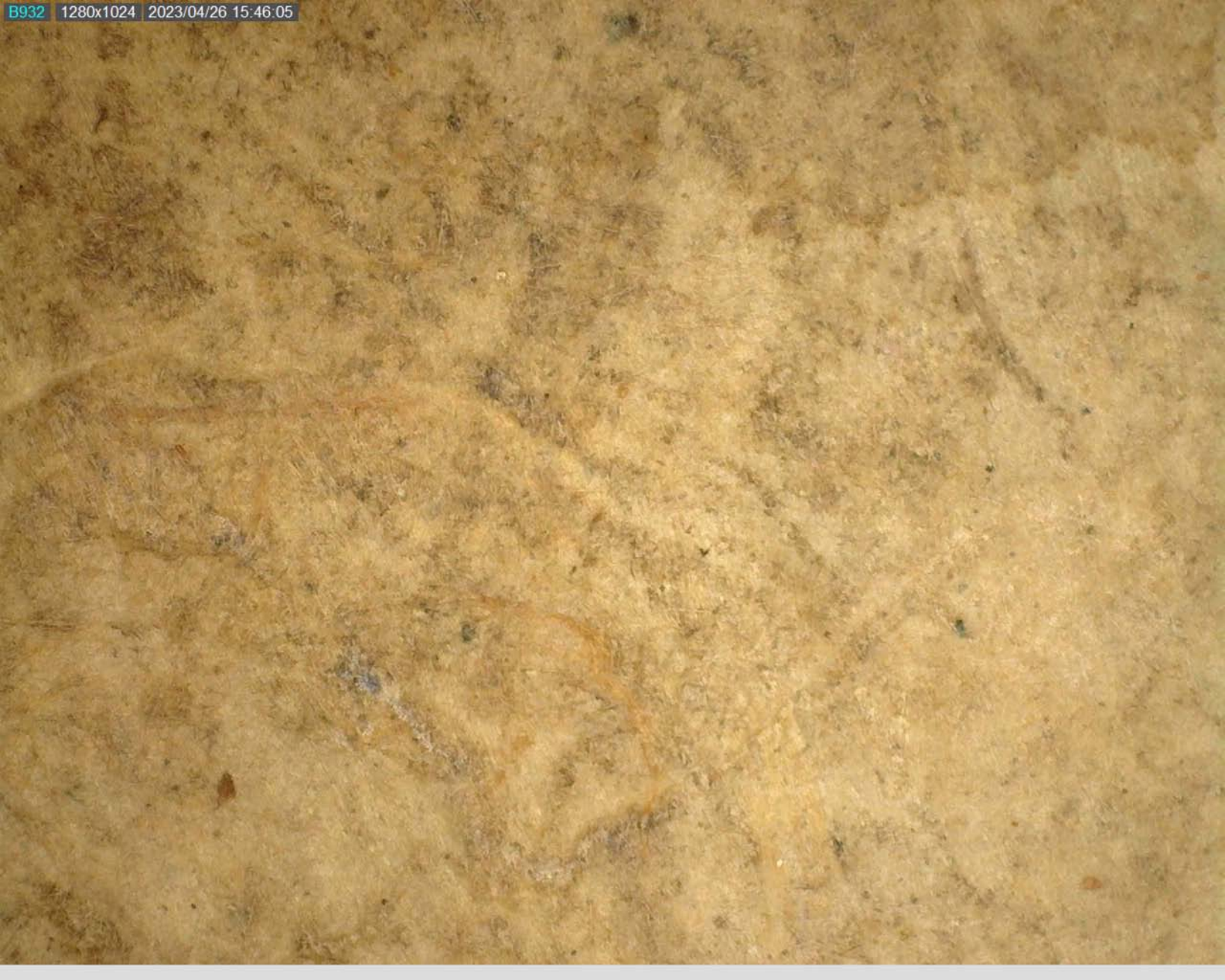
























Handwritten text in a stylized script, possibly a cursive or shorthand form, rendered in dark ink on aged, textured paper. The characters are highly stylized and difficult to decipher. The text is arranged in a single line across the middle of the page, with a large, decorative flourish above it.



