

Handwritten characters in black ink on aged paper. The characters are written in a cursive style, likely representing the Chinese characters '西' (Xī) and '一' (Yī).

Handwritten characters in red ink on aged paper. The characters are written in a cursive style, likely representing the Chinese characters '西' (Xī) and '一' (Yī).

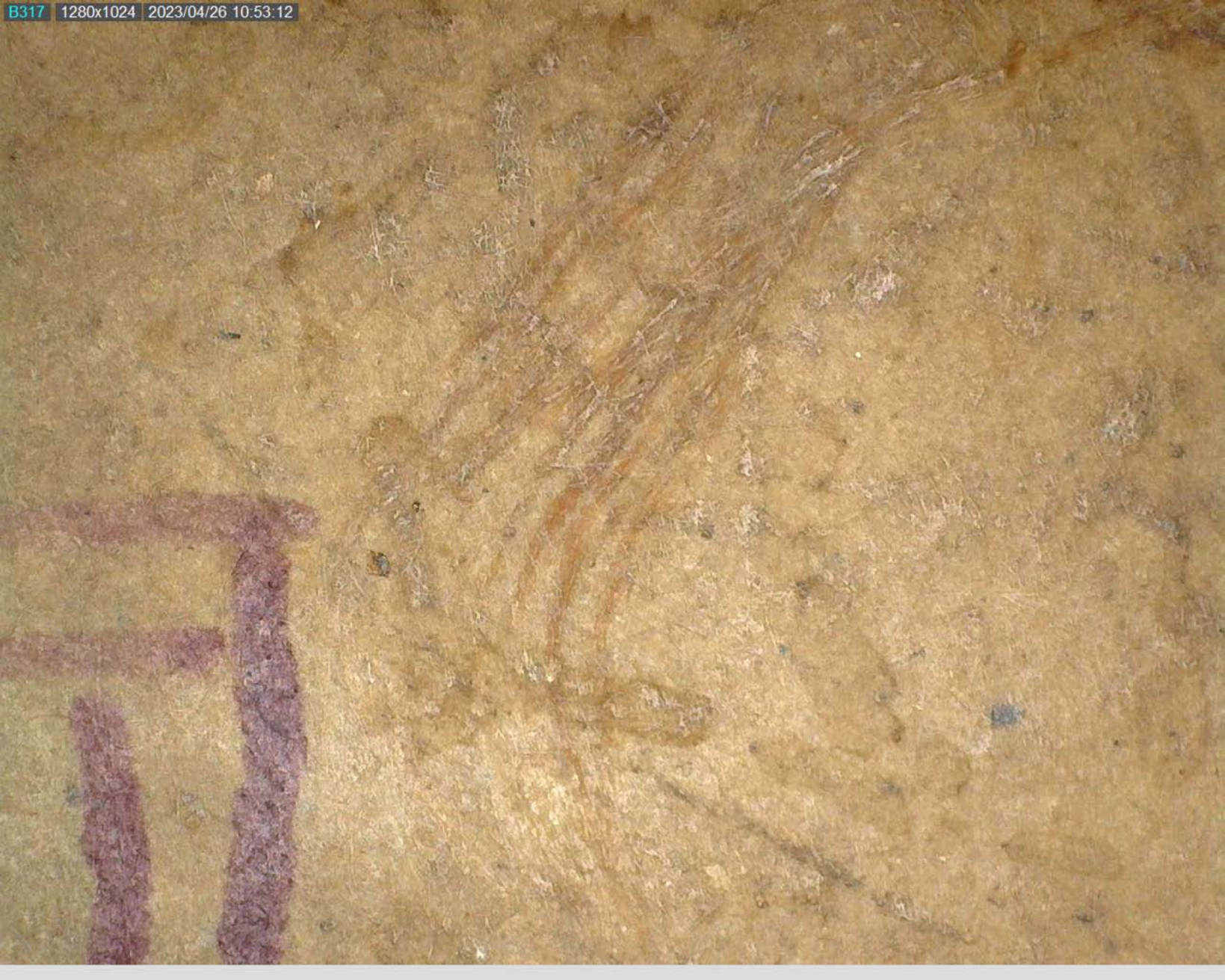






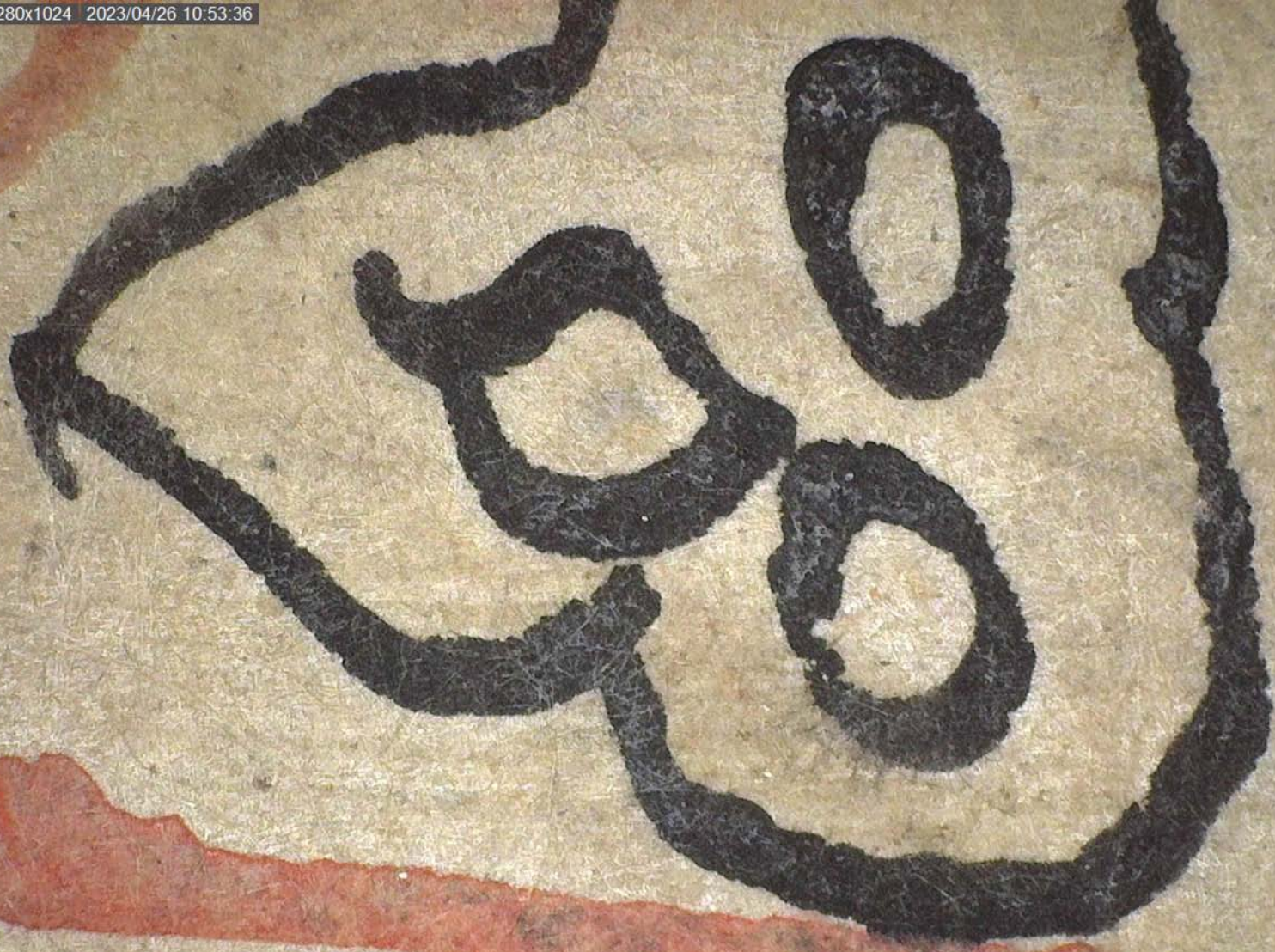












Handwritten text in a stylized script, possibly Indic or Chinese, written in black ink on aged, textured paper. The text is partially obscured by two horizontal red lines above it. The characters are bold and thick, with some characters resembling 'A', 'B', and 'C' in a stylized form.



Handwritten symbol or character in black ink on aged paper.

