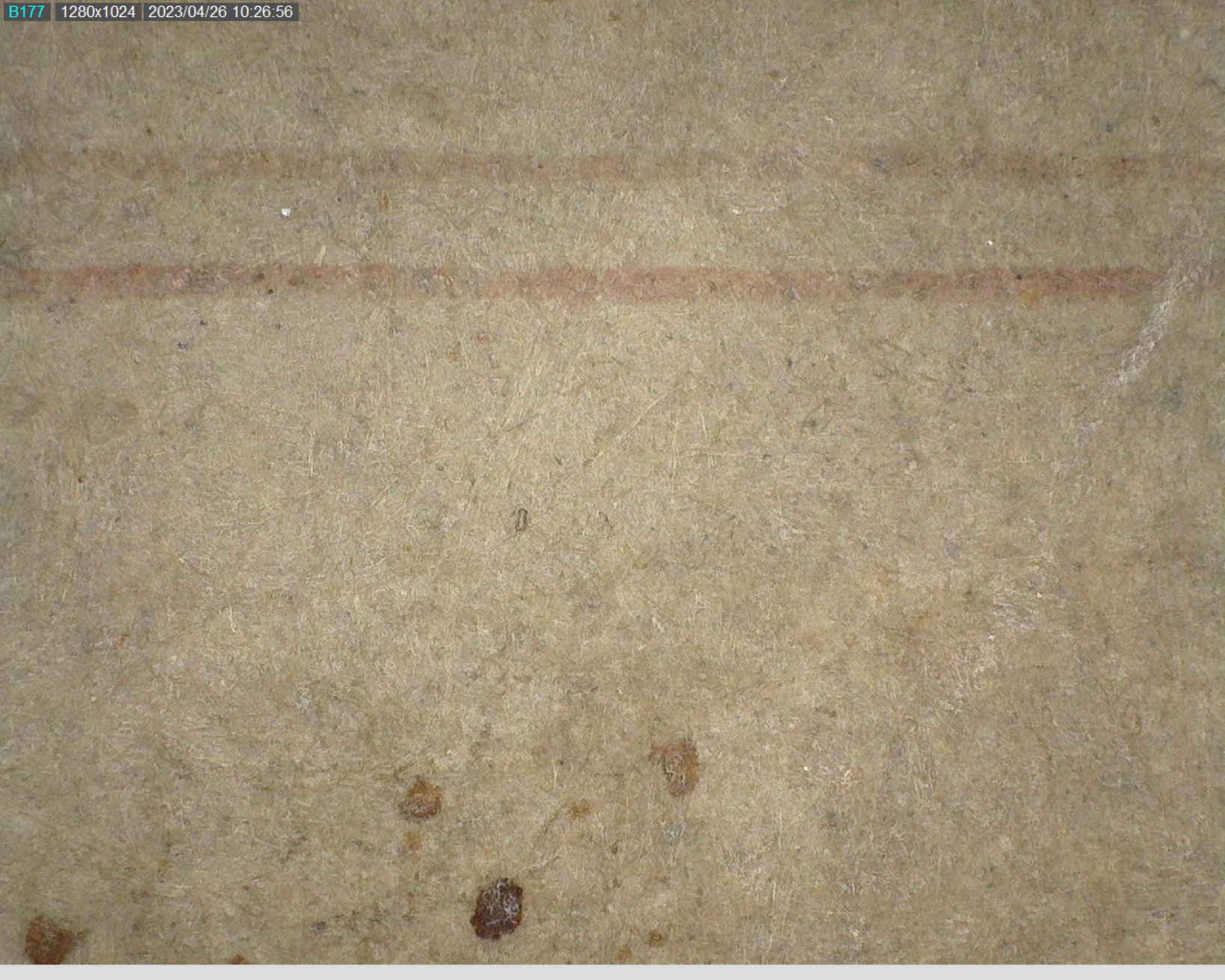




Handwritten Chinese characters in cursive script (caoshu) on aged paper. The characters are written in dark ink and appear to be '山' (mountain) and '水' (water), which together mean 'mountain and water' (山水). The characters are highly stylized and connected, with thick, expressive strokes. The paper is light brown and shows signs of aging, including some foxing and a vertical crease on the right side.







QIAI

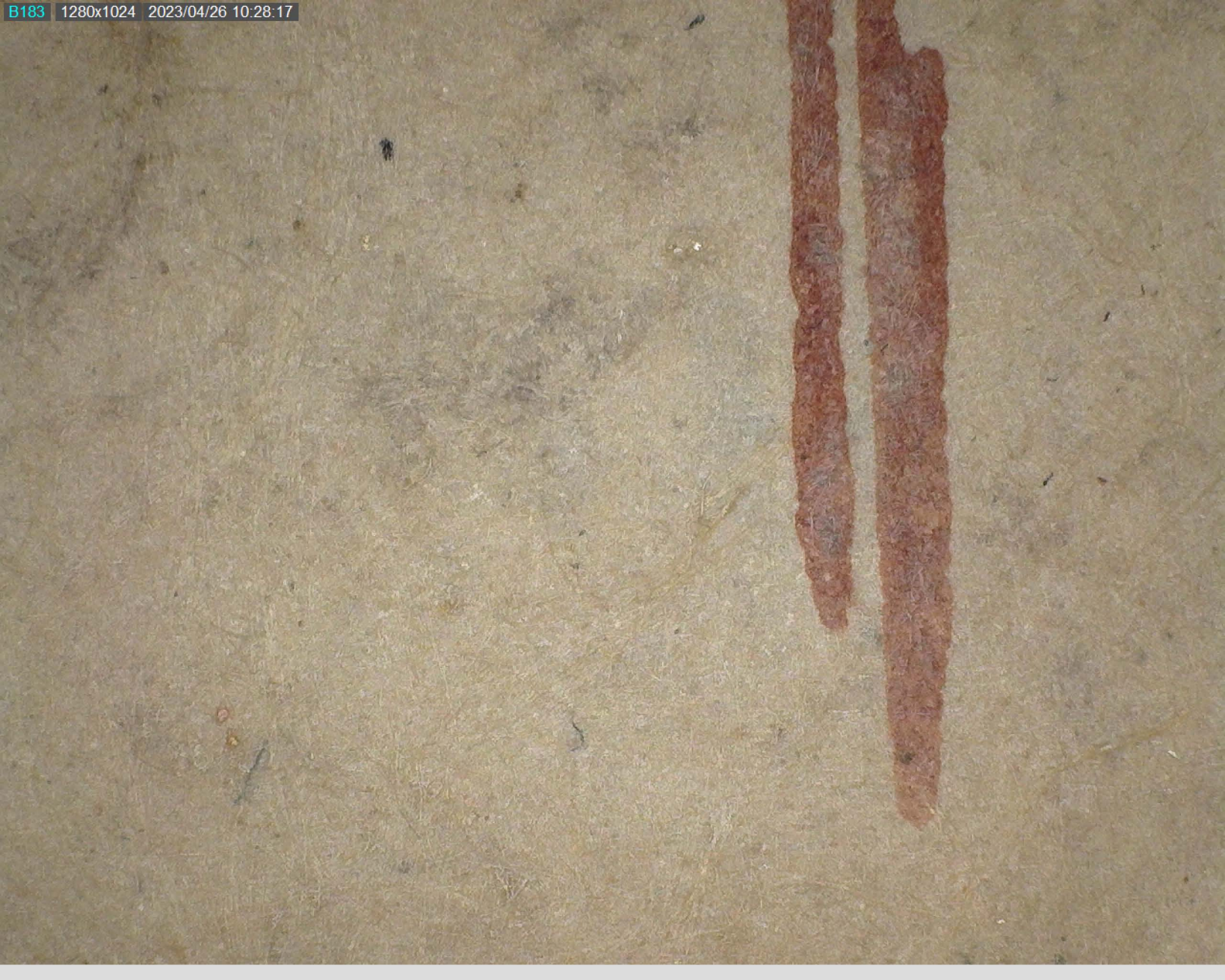


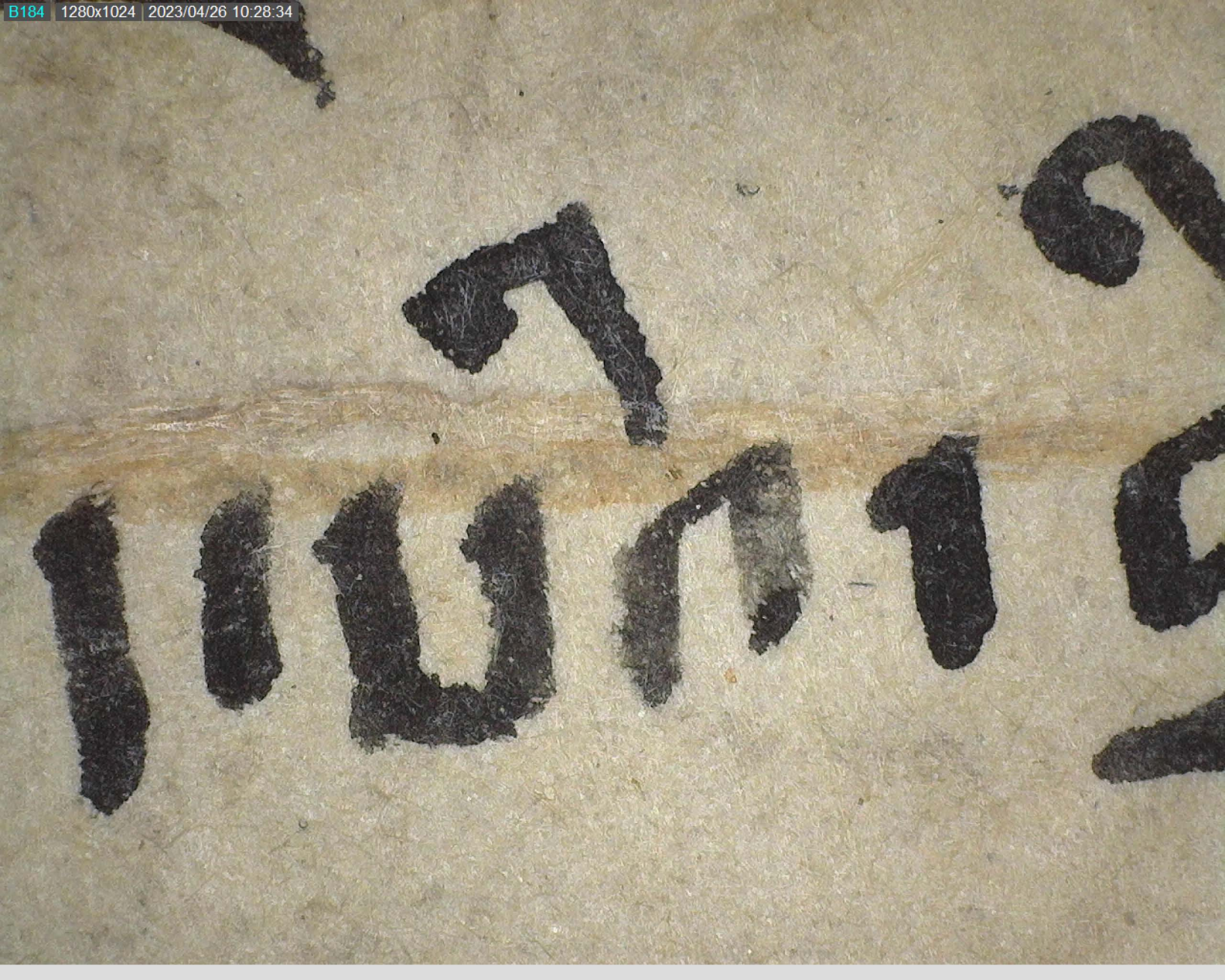


Handwritten text in a stylized, cursive script, possibly representing a name or a signature, rendered in dark ink on a light-colored, textured paper background.

Handwritten Chinese characters in cursive script (caoshu) on aged paper. The characters are dark and appear to be '何' (He) on the left and '山' (Shan) on the right, with a smaller character '山' above the right one. The paper is yellowed and textured.







Handwritten text in a stylized, cursive script on aged, textured paper. The characters are dark and appear to be written with a brush or thick marker. The text is arranged in a single line, with a horizontal line drawn through the middle of the characters. The characters are highly stylized and difficult to decipher, but they appear to be a form of cursive or shorthand.

