





馬車



Handwritten characters in black and red ink on aged paper. The black characters on the left appear to be 'H', 'I', and 'I'. The red characters on the right are stylized and partially obscured, possibly representing 'A' and 'A'.



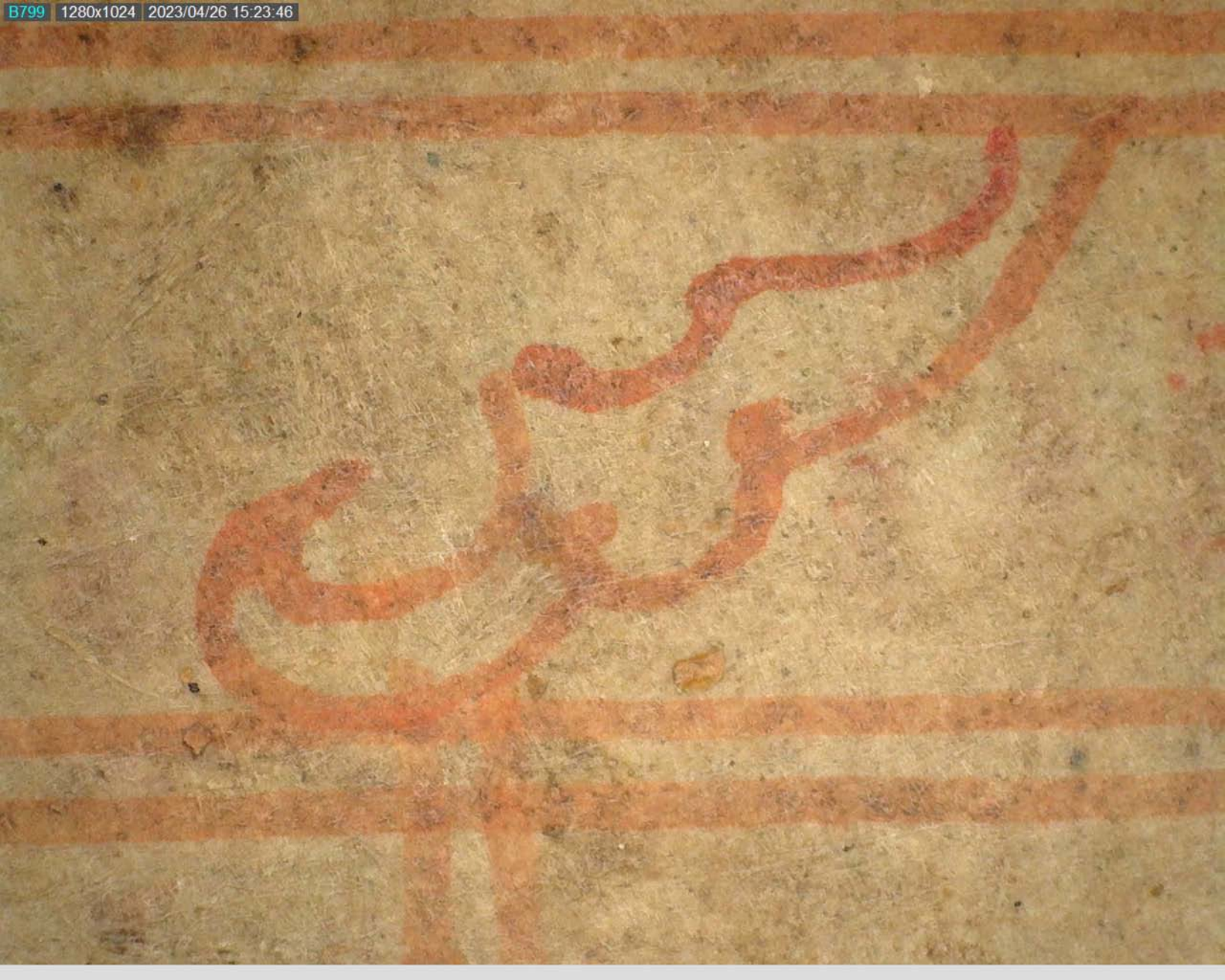
Handwritten characters in red ink, possibly representing the characters '山' (mountain) and '川' (river).

Handwritten characters in black ink, possibly representing the characters '中' (middle) and '口' (mouth).

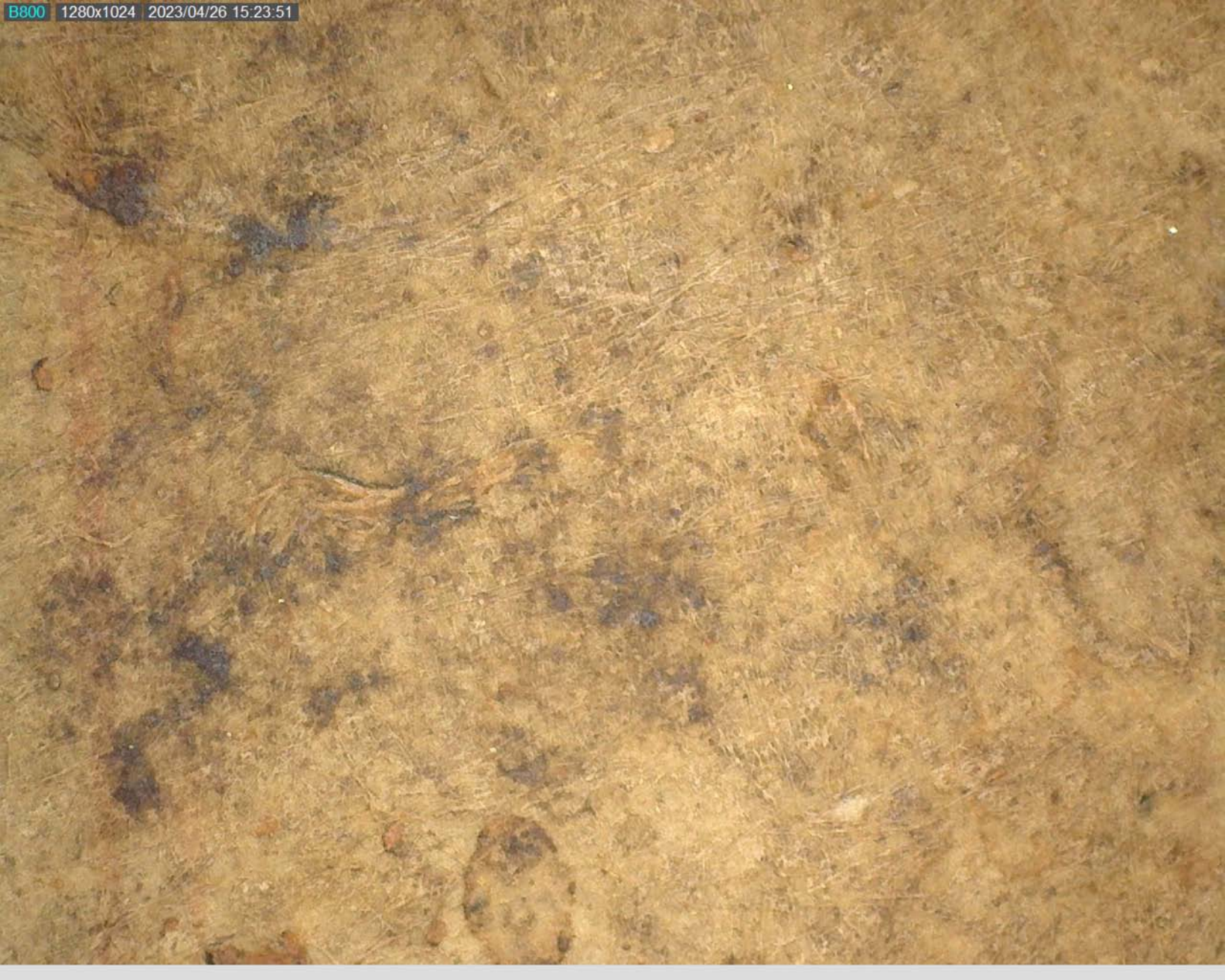


Handwritten characters in black ink, a vertical black line, and a vertical red line on aged paper.

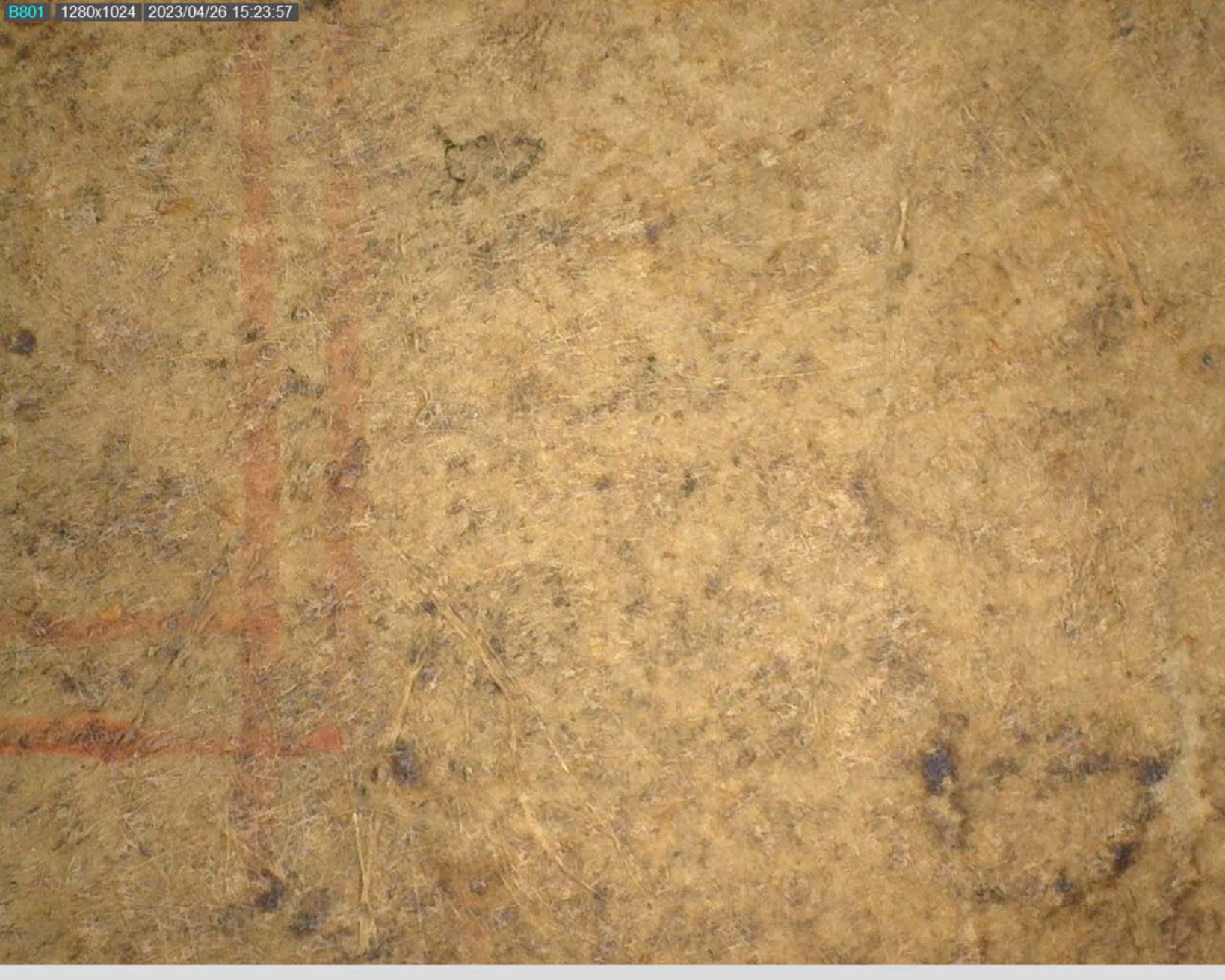
















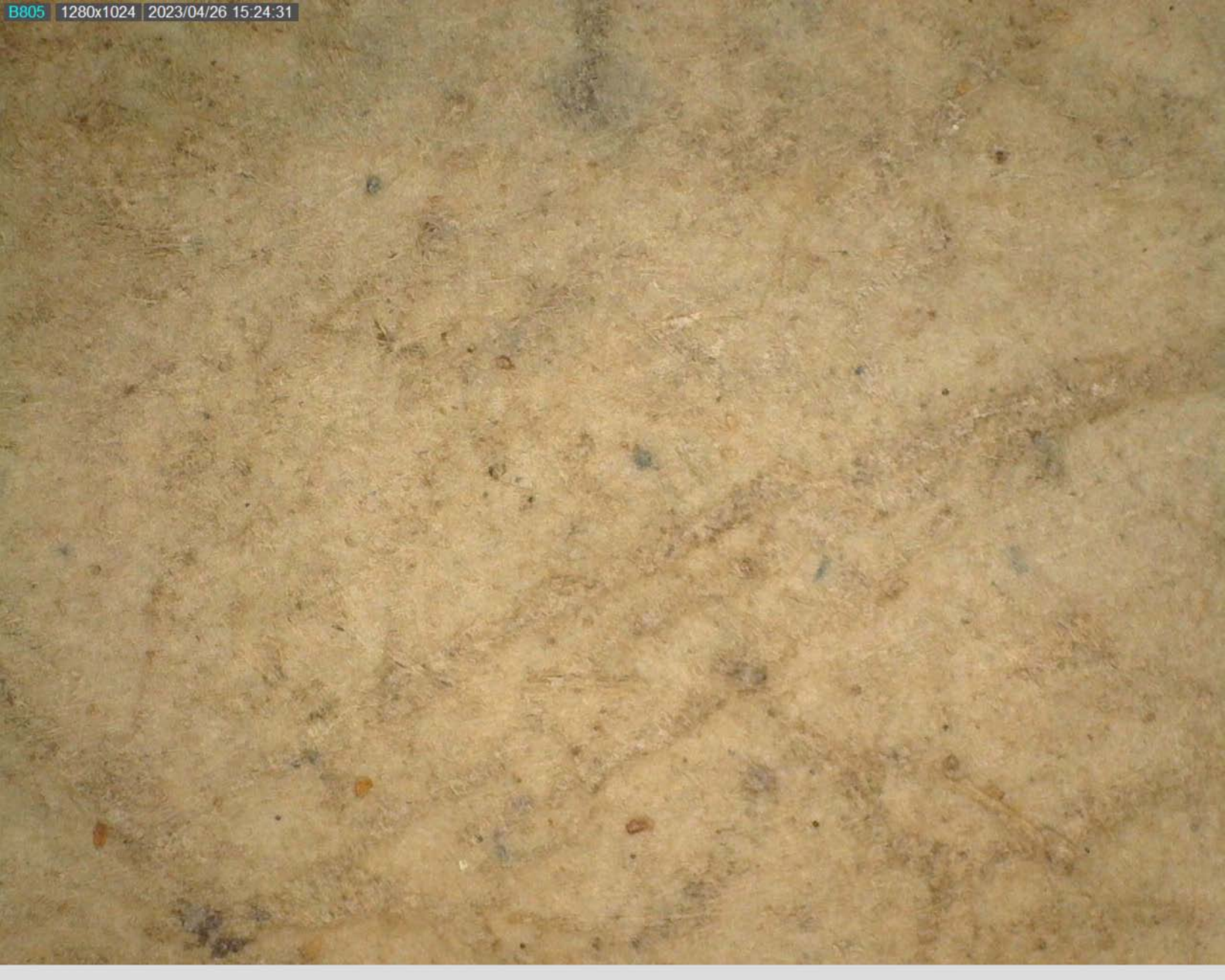








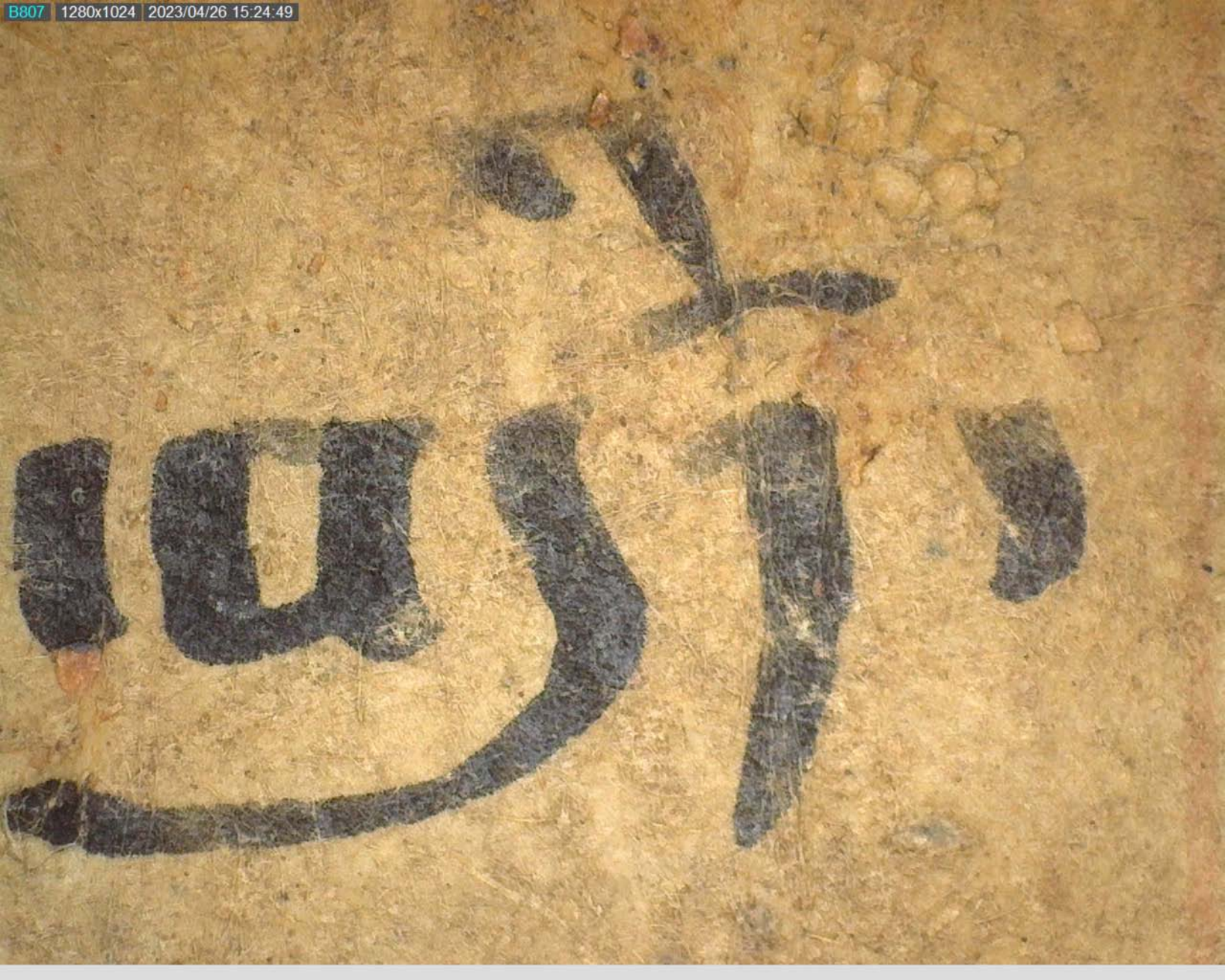




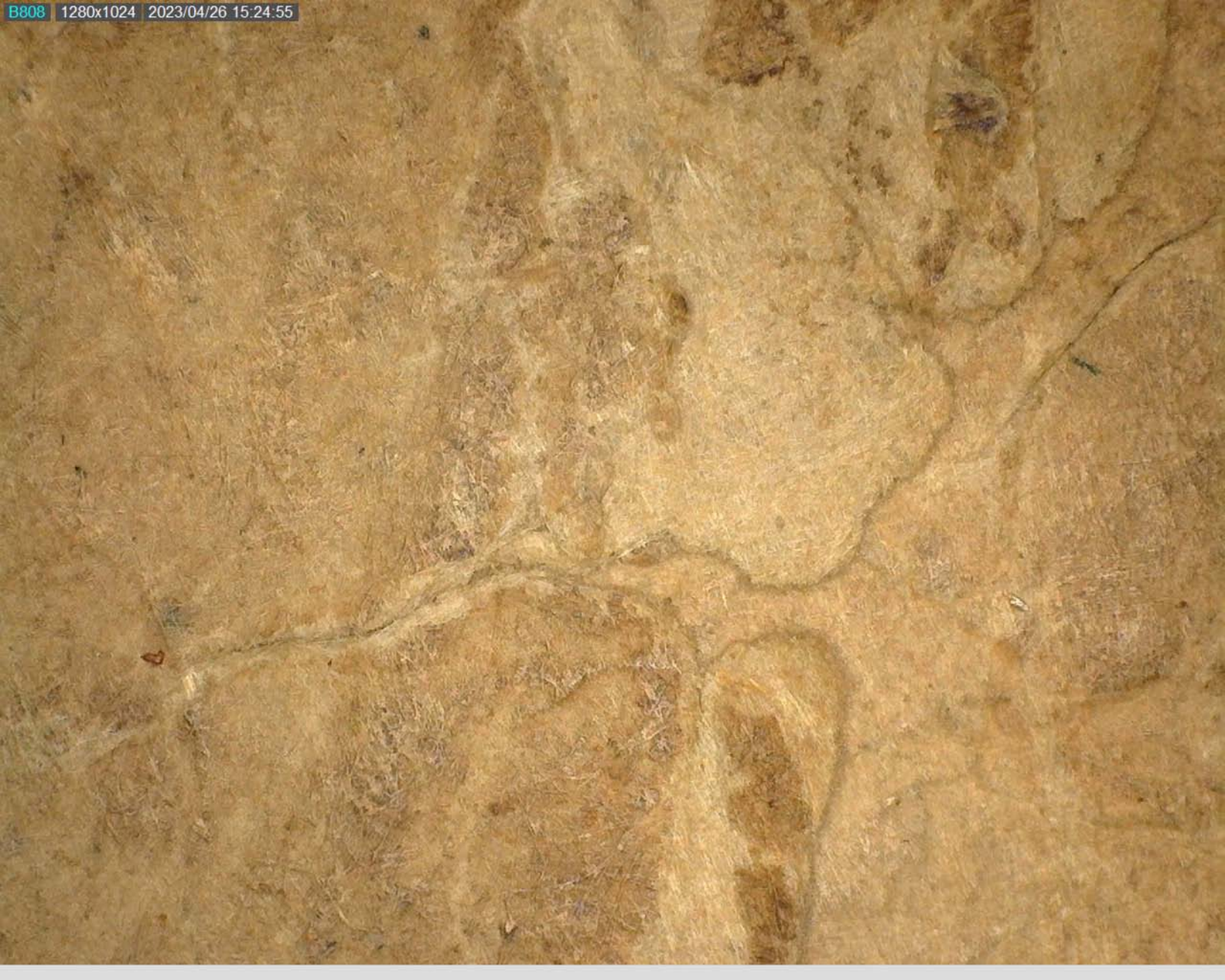


Handwritten text in a dark ink on aged, textured paper. The text is written in a cursive or stylized script, possibly a form of shorthand or a specific dialect. The characters are dark and somewhat thick, suggesting they were written with a brush or a similar tool. The paper shows signs of age, including discoloration and small brown spots.

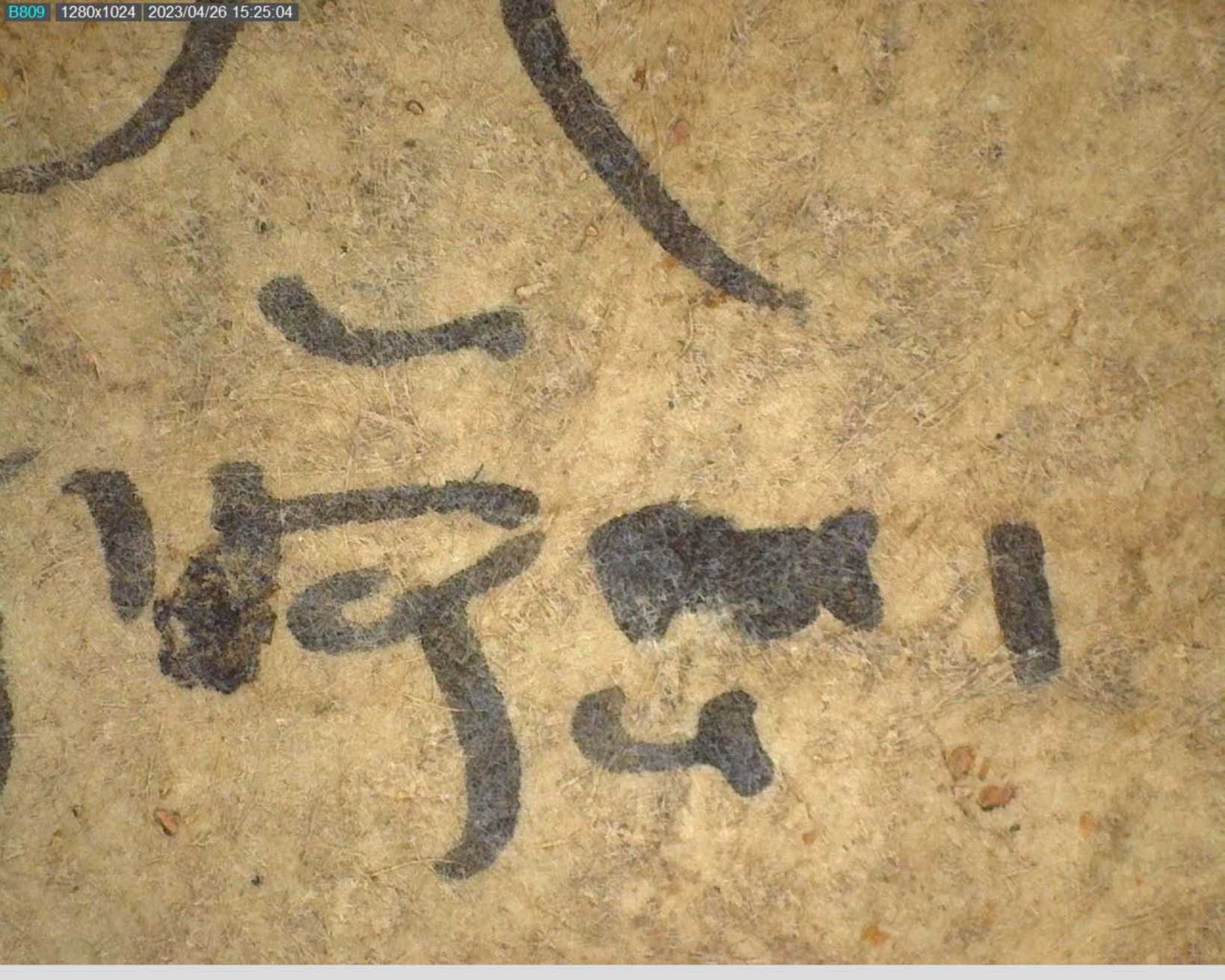














Handwritten characters in dark ink on aged paper, possibly the first two characters of a word.

Handwritten characters in dark ink on aged paper, possibly the last three characters of a word.



一

一

一

一

一

一

一



