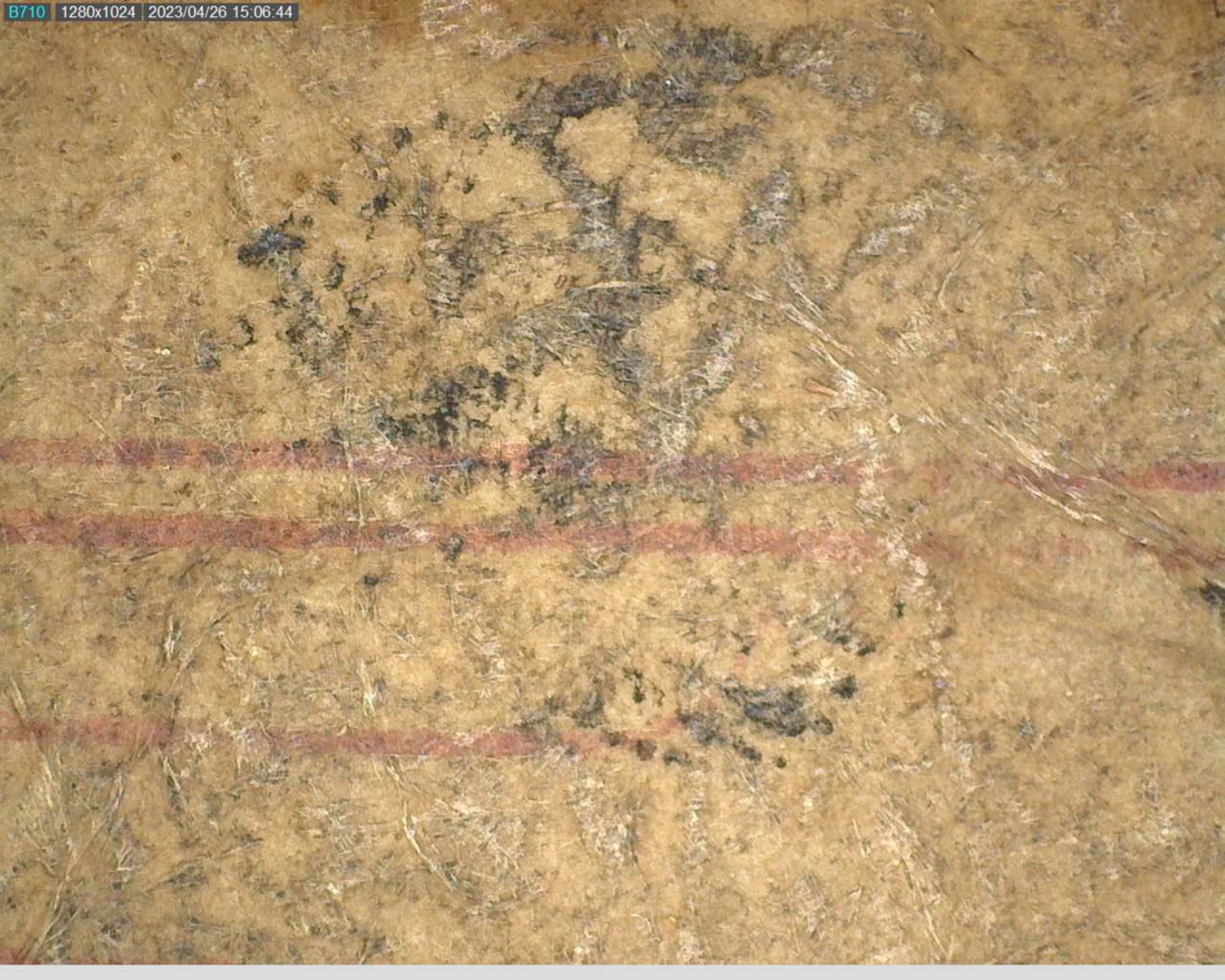


Handwritten Chinese characters in seal script (Zhuanshu) on aged paper. The characters are dark and appear to be '天' (Heaven) and '地' (Earth), which together form the idiom '天地' (Heaven and Earth).

















Handwritten text in a dark ink on aged, textured paper. The text is written in a cursive or semi-cursive style, possibly representing a name or a short phrase. The characters are dark and somewhat irregular due to the ink and the paper's texture. The text is arranged in a single line across the middle of the page.

